

Switching Core License in NovaCor

INTRODUCTION:

Each NovaCor chassis has a 10 core processor. The number of cores per NovaCor chassis is scalable through individual core licensing. If a NovaCor chassis is currently licensed for N (where $N < 10$) number of cores, additional core licenses can be purchased. Each core license file can contain license for one or multiple cores. If user has multiple chassis with multiple cores it is possible to swap core(s) from one chassis to another. The process of swapping license to change the number of cores is explained in the following sections.

STEPS TO TRANSFER CORES FROM ONE CHASSIS TO ANOTHER

1. Revoke the current core license of a NovaCor chassis:
 - Open config_file editor in RSCAD (5.003 or newer) as shown in Figure 1.

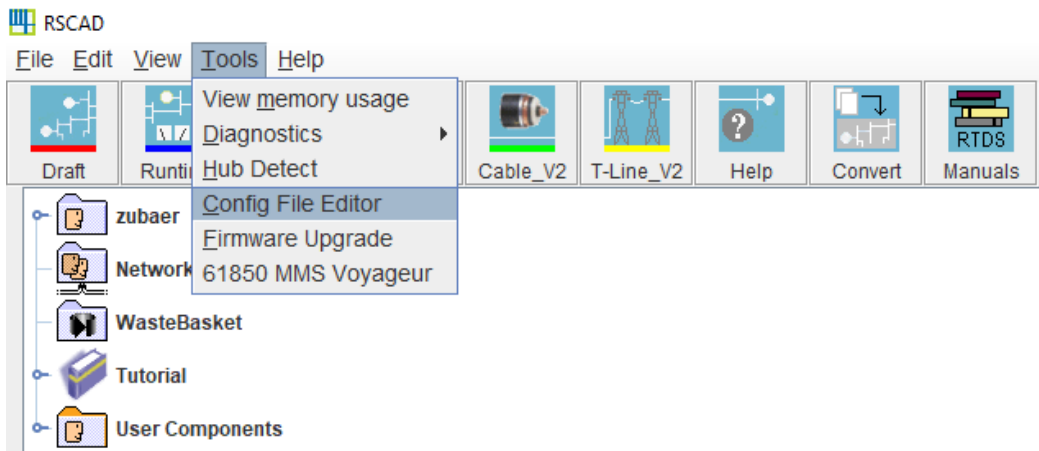


Figure 1: Open Config File Editor in RSCAD

- Hold down the keyboard "Ctrl" key and select "Cores" button of the target rack as shown in Figure 2.

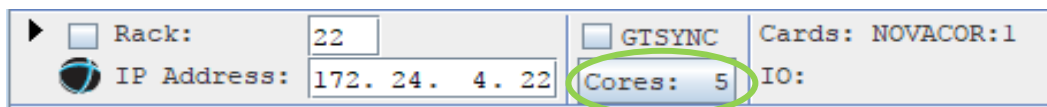


Figure 2: NovaCor Rack with 5 Cores Licensed

- Click “Revoke License” as shown in the green circle in Figure 3.

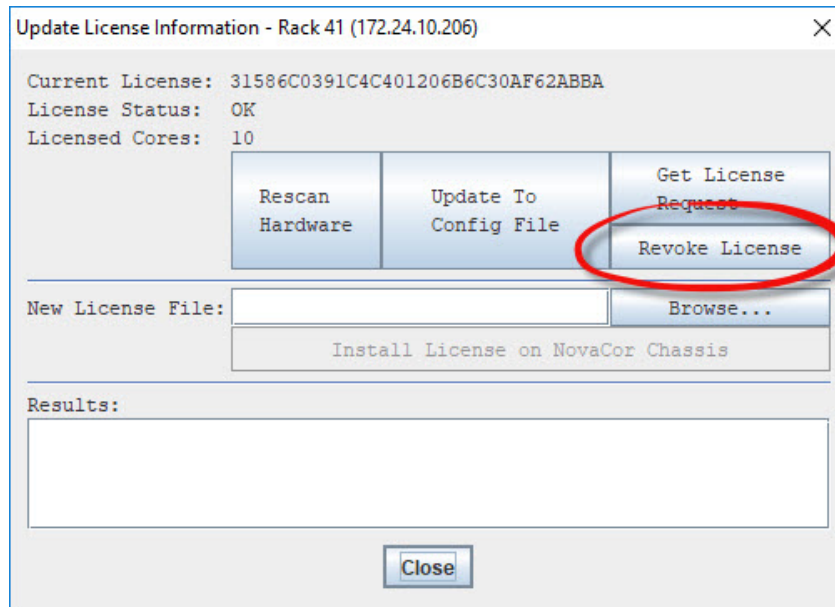


Figure 3: Generating a License Request File

Click OK when you see the following warning message.

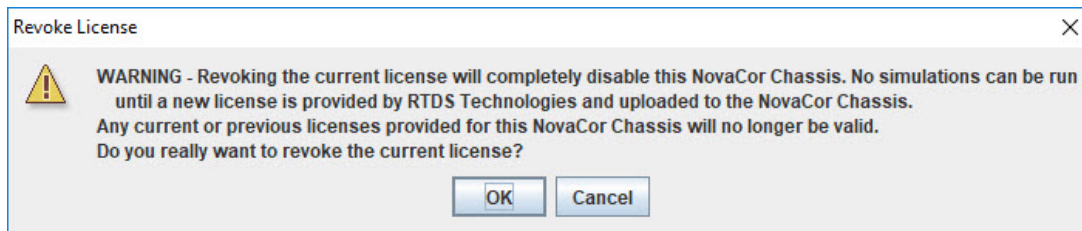


Figure 4: Revoke License Warning Message

A license request security information file has been created and stored in the specified user directory (C:\RTDS_USER). Please select “OK” to the following window.

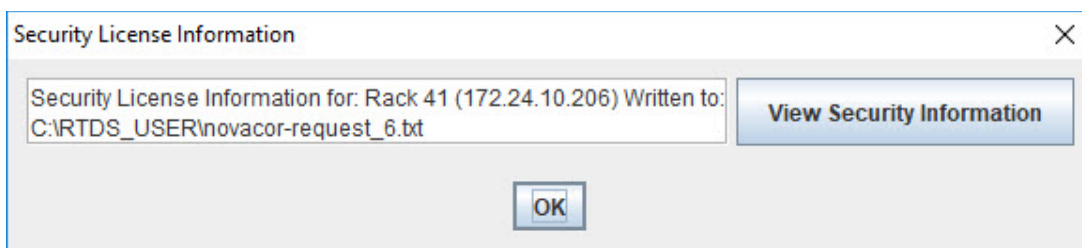


Figure 5: Revoke License Request Security Information File

2. Please repeat the above procedure for the second chassis. i.e. both chassis involved in the core swap should have their license revoked.

- The configuration file for the corresponding rack now shows the license status as “ERROR” with zero cores as shown in Figure 6.

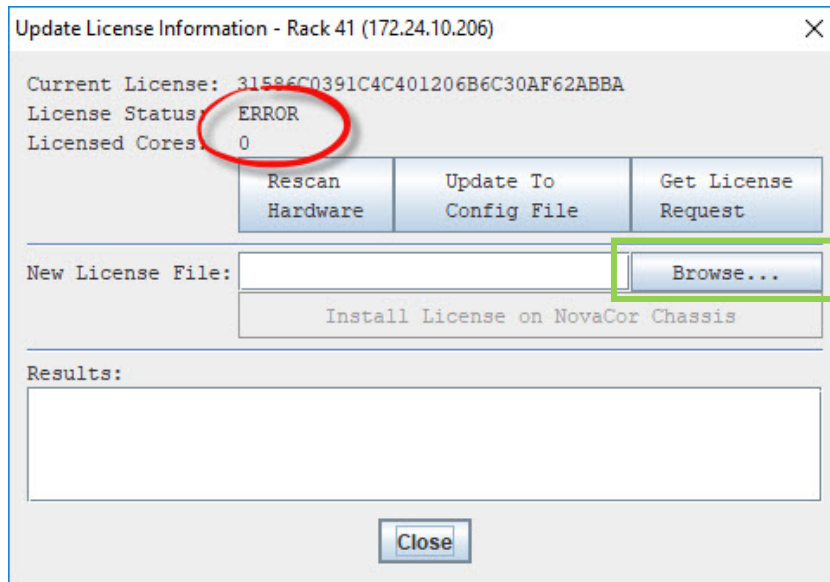


Figure 6: Zero Core License Error after License Revoke

3. Send the license request security information file as shown in Figure 5 to support@rtds.com. User will need to request the new number of cores they want to install for each of the chassis involved. RTDS will send new license files to the user.
4. Install the license file:
 - Upon receipt of new core license file, save the file to any location on the computer.
 - Select browse in the “Cores” menu as shown in the green rectangle in Figure 6.
 - Browse and locate the license file (*.txt) as shown in Figure 7. Select the file and click on “Choose NovaCor License File”.

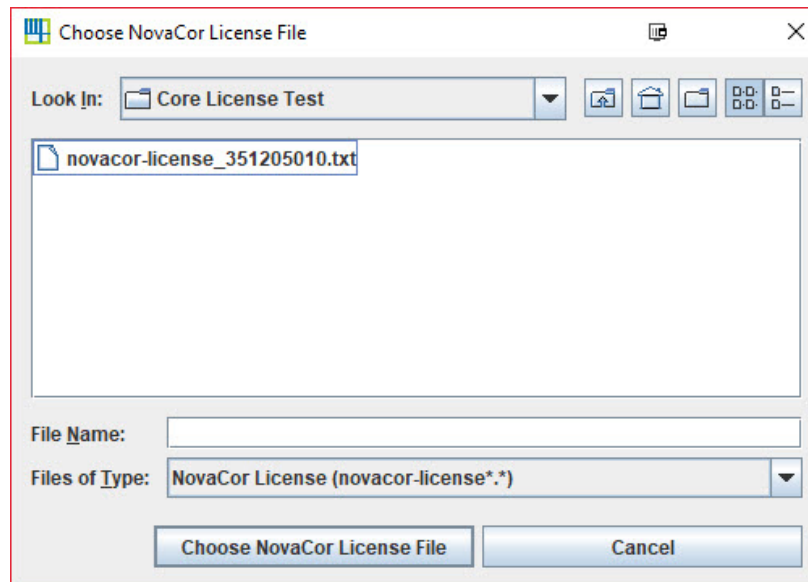


Figure 7: Locating the NovaCor License File

- Select "Install License on NovaCor Chassis" as shown in Figure 8. This will start the license installation process. Once the installation is complete the message shown in Figure 9 will appear. Click OK, this rescans the RTDS hardware and updates the config file.

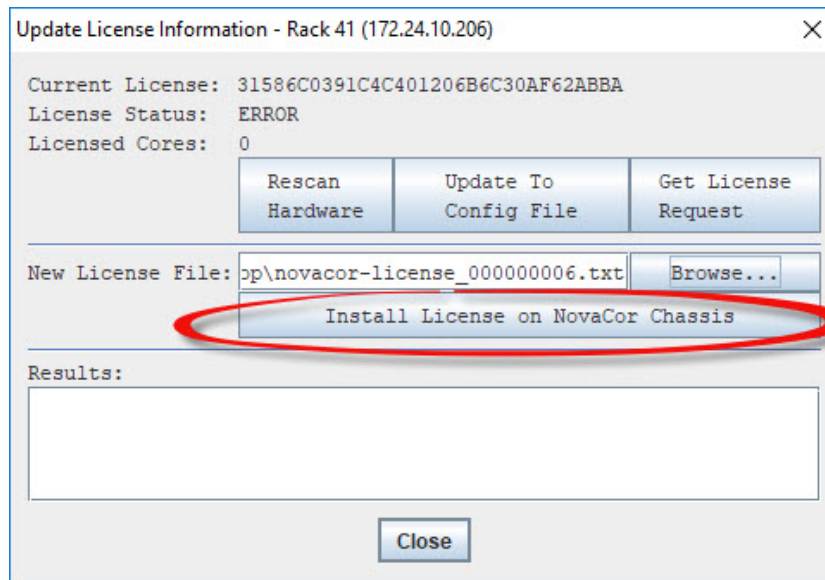


Figure 8: Install License on NovaCor Chassis

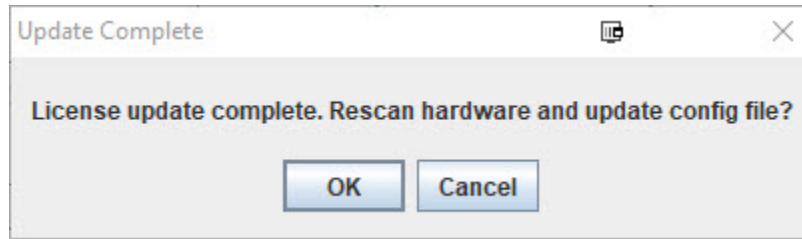


Figure 9: Update Complete Confirmation

The number of licensed cores is displayed as shown in Figure 10. In this example a 10 core license was installed.

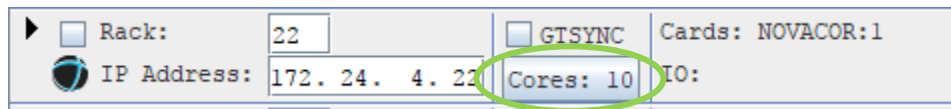


Figure 10: Number of Licensed Cores

5. Save and close the config file editor. This completes the core license update process.

TROUBLESHOOT

In case the update fails for

- Unexpected reset of the NovaCor chassis
- Network connection failure
- Any other reasons

Please repeat the installation procedure again with the same license file. If the problem persists please contact RTDS at support@rtds.com.